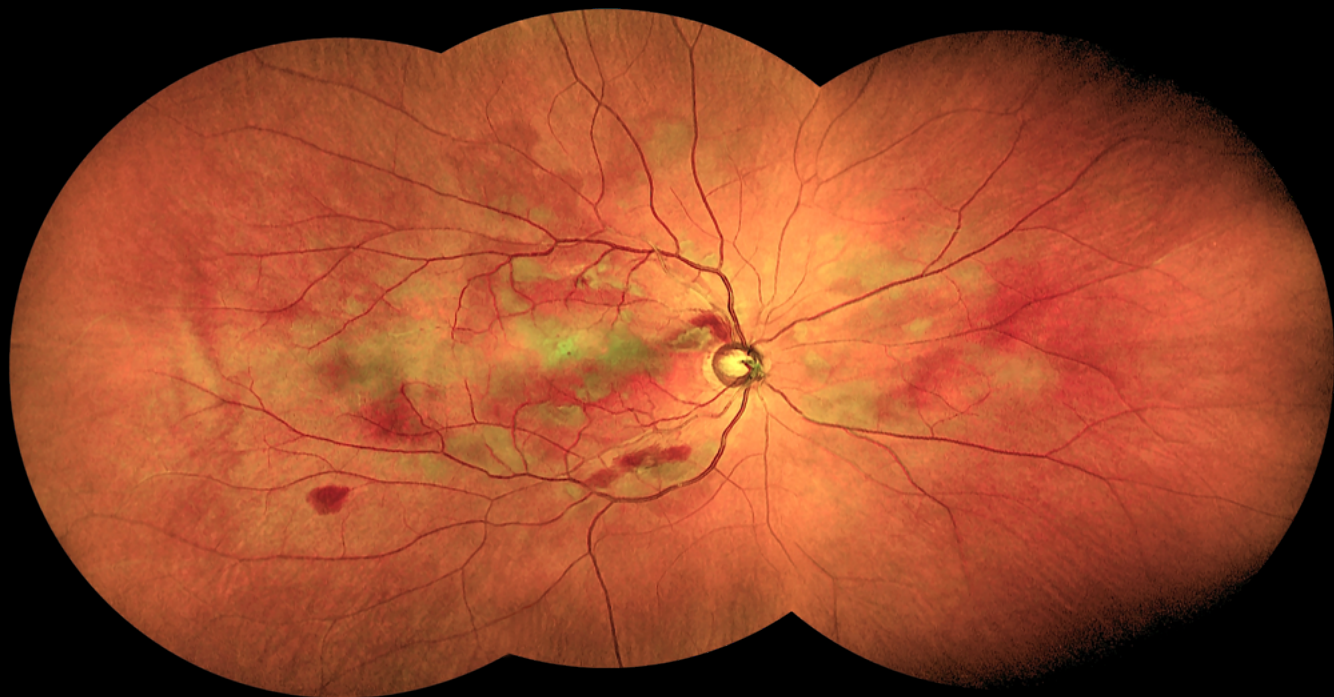


Apollo CRO PLUS

150° Color, AF, FFA and ICGA

Video Recording

Offline Retina Assistant



Microclear Apollo ultra-widefield CRO PLUS with ICGA

Pushing the boundaries of Indocyanine Angiography



Indocyanine Angiography

Fast, precise and flexible management of your ICGA sessions with multiple options



Autofluorescence

Single shot or combine multiple shots to increase the resolution



Video Recording

Don't miss the initial stages and store and review from any workstation



150° one shot and up to 240° in two shots

Capture two to six photos and combine in a panorama view easily thanks to the fast and precise joystick control



Unlimited offline Retina Assistant included

Ready to use Risk Assessment software with 19 pathologies detection to support your decisions



Pupil size 1.5mm

Optimal photos even on really small pupils resulting on higher success rate of gradable images



Fluorescein Angiography

Maximum control of your Angiography examination with all the features you need



Strong penetration: cataract free

Strong Confocal design allows to separate better the retina layers and to penetrate stronger through cataract and eye opacities.



Optical Zoom 150° - 90° - 45° - 22° without changing lens

One click switch Field of View to zoom into areas of interest



Cells and blood flow tools option

Optional module available for 8° cellular view imaging with software for retinal cell count, blood flow velocity and vascular thickness measurement

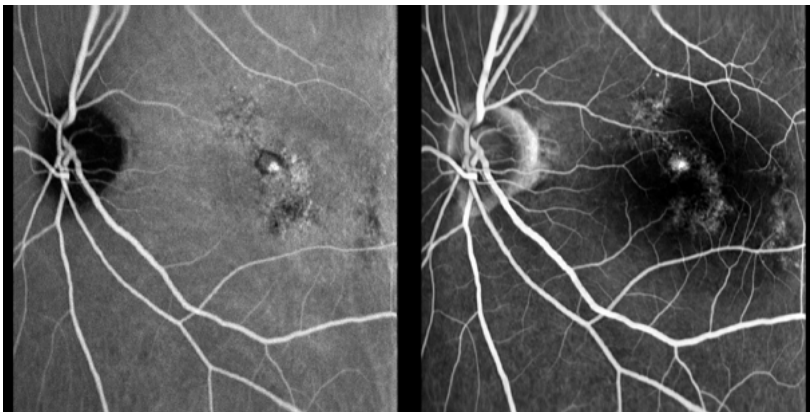
Pushing the boundary of ICGA

Achieve full control of your exam modalities.

The state-of-the-art Indocyanine Angiography module allows you to take out the most for your clinical evaluation. Take advantage of the ultra-widefield and shot 150° images easily and with confidence.

Move quick and precise with the powerful joystick which gives you full flexibility on the operation.

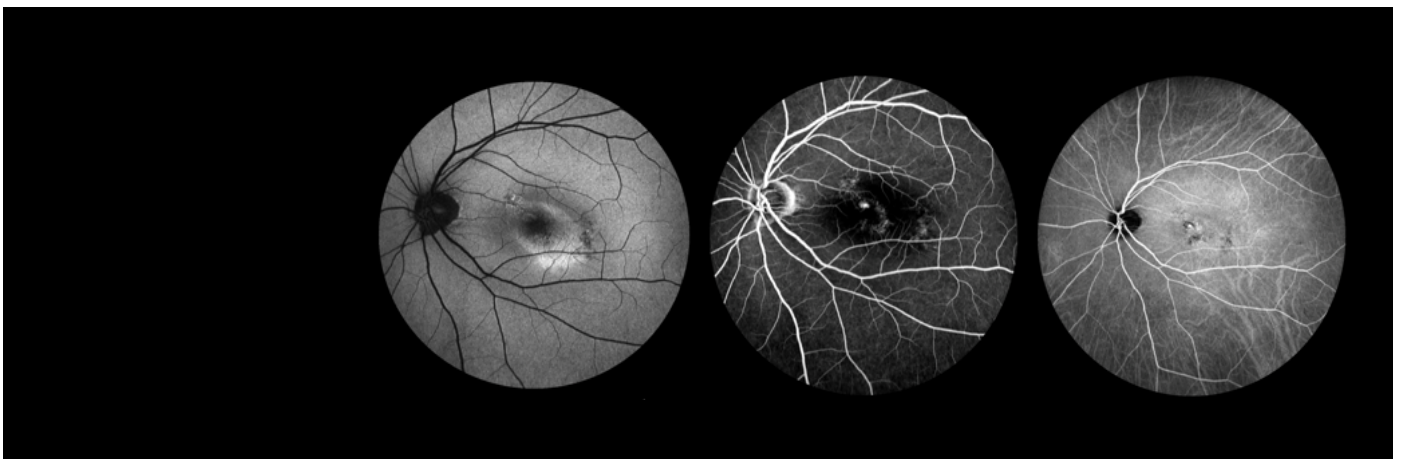
Customize the light intensity with instant preview, exploit the optical zoom for details and cover ultra-widefield shots with the versatile mosaic up to 240°.



All modalities in one model

CRO PLUS is the flagship of the Apollo family and includes all features of **CRO** adding ICGA.

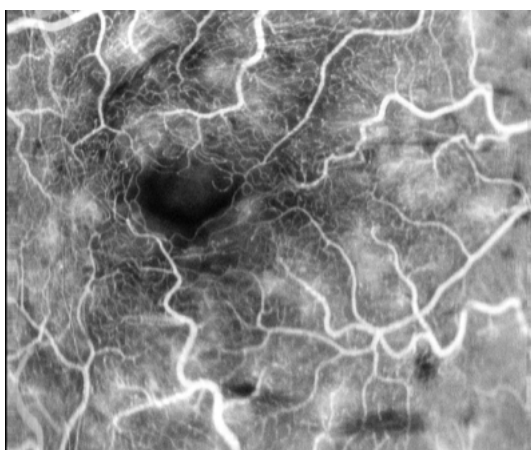
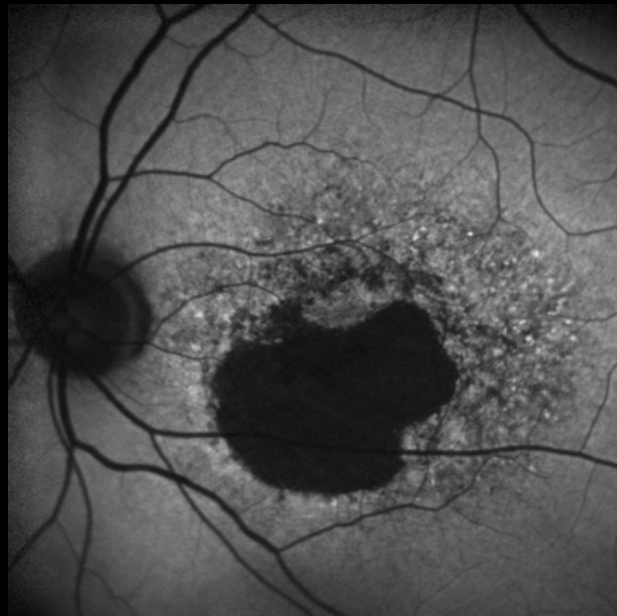
Obtain ultra-widefield images with easy and fast capture of 150° retinal photos in all modalities: Infrared, Redfree, Colour, Autofluorescence, Fundus Fluoroangiography, and create panorama views up to 240°.



Full fledged Autofluorescence and Fluorescein Angiography

Capture the big picture with 150° photos, and one-touch zoom to 90°, 45° and 22° views. Don't miss FFA early stages with unlimited videos at any angle combination.

Apollo CRO is fully configurable and has all the flexibility required to empower your FFA examination, yet easy to use with a fast learning curve.



Upgrade your imaging capabilities

Obtain ultra-widefield images with easy and fast capture of 150° retinal photos in all modalities: Infrared, Redfree, Colour, Autofluofluorescence, Fundus Fluoroangiography, and create panorama views up to 240°.

Controlling Apollo feels comfortable thanks to the fast and precise joystick that allows to take a good photo in a matter of a few seconds.

The Strong Confocal optical design delivers a high success rate of gradable images even with small pupils and adverse light situations.



Apollo CRO PLUS technical specifications

Imaging Modalities	<ul style="list-style-type: none"> Infrared - 785 nm Redfree - 488 nm Color Autofluorescence - 488nm Fluorescein Angiography photo and video - 488nm Indocyanine Angiography photo and video - 785nm
Field of View (eye center)	<ul style="list-style-type: none"> One shot single capture Optical zoom 150° / 90° / 45° / 22°
Automatic Montage	<ul style="list-style-type: none"> Up to 240° mosaic 2 to 9 images
Non Mydriatic	<ul style="list-style-type: none"> Minimum pupil 1.5mm
Resolution	<ul style="list-style-type: none"> 5 microns
Fixation Targets	<ul style="list-style-type: none"> Internal 1 central and 8 peripheral fixation targets External flexible target
Diopter Compensation	<ul style="list-style-type: none"> -35D - +50D
Software Included	<ul style="list-style-type: none"> Patient management Retina review and annotation Multiple review stations DICOM compatible
Retina Assistant	<ul style="list-style-type: none"> 19 pathologies detection Offline, no internet required Unlimited license use
Hardware Included	<ul style="list-style-type: none"> PC computer Monitor Table (printer)
Power	<ul style="list-style-type: none"> Voltage: 100-240V~50-60Hz

Manufacturer: Suzhou MicroClear Medical Instruments Co., Ltd.