

Frey

CE 1434



Digital Slit Lamps

SL + SLI-200 & SLI-200 4K

freymedical.eu

Text text text

FREY SL-100 and SL-110, advanced digital slit lamp microscopes are designed for high performance, accurate diagnostics, reliability and patient comfort. Brilliant optics result in stunning image quality and resolution.

An innovative LED illumination system with integrated eye illumination and digital camera delivers superb clinical viewing. FREY digital slit lamps provide unique quality with fully integrated design already at manufacture stage.

Implement efficient, high-level work flow and integration into clinical practice, with less complicated and more integrated device.

Frey combines modern design and enduring performance providing the clinician with fatigue free examinations every day. Yellow contrast enhancing filter for additional contrast is cleverly integrated into the optical body of the microscope, and can be subtly operated for viewing corneal staining.



Frey

SAME PRICE, TWO OPTIONS, YOU CHOOSE

SLI-200

INTEGRATED SCREEN



SLI-200 4K

EXTERNAL SCREEN CABLE CONNECTION

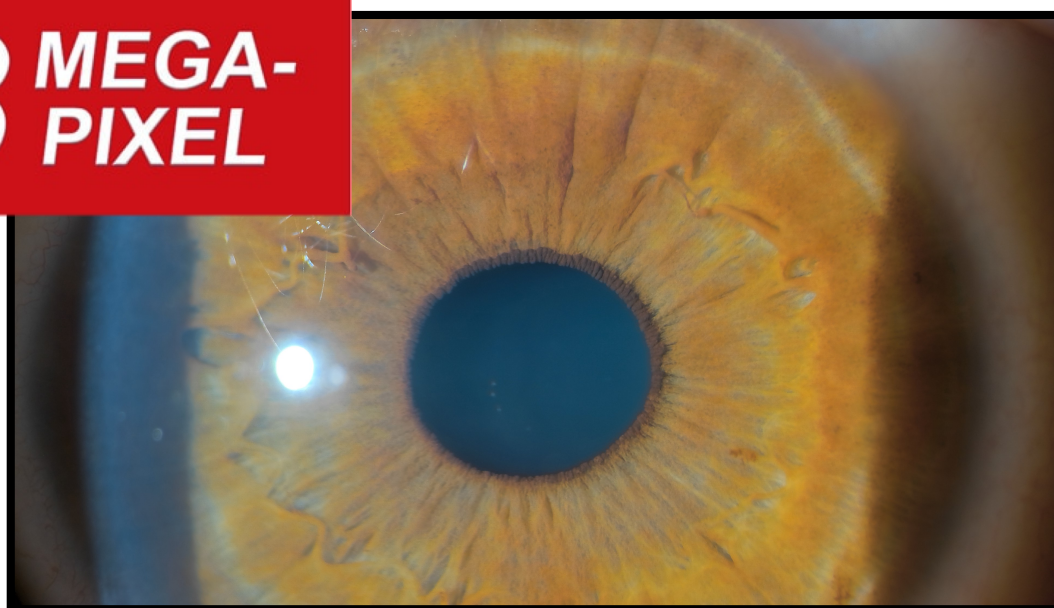
4K
ULTRA HD



Frey



**8 MEGA-
PIXEL**

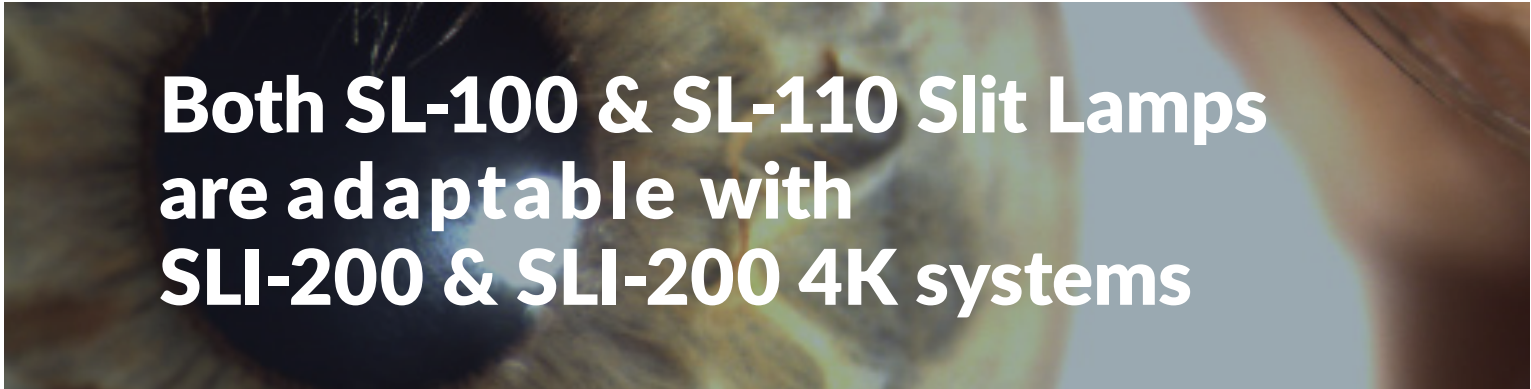


FREY Spółka Jawna
Wołodajowskiego 38
05-502 Piaseczno
POLAND

freymedical.eu

Technical specification and devices details.

SLI-200	
Screen	AMOLED 5' touch screen
Sensor	CMOS Image Sensors with a 3.45 µm Pixel
Memory	128 GB internal high endurance flash storage
Image processing technology	HDR, Global Shutter Function
Photo resolution	2048x1536 px
Movie resolution	960x720 px
Communication	Bluetooth 4.2, Wi-Fi AC
Depth of colour	up to 12 BPP
Other features	Video streaming to multiple devices
	Photo & video capture
	Automatic L/R eye detection
SLI-200 4K	
Sensor	CMOS Image Sensors 4K (8 Mpix)
Image processing technology	HDR
Photo resolution	3840x2160
Video resolution (Fps)	3840x2160 (30 Fps); 1920x1080(120 Fps)
Communication	48 BC
Depth of colour	up to 12 BPP
Other features	Photo & video capture
	Automatic L/R eye detection



**Both SL-100 & SL-110 Slit Lamps
are adaptable with
SLI-200 & SLI-200 4K systems**

SL-100 Slit Lamp - Advanced LED Slit Lamp Microscope

Frey SL-100 is an advanced LED slit lamp microscope designed for high performance, accurate diagnostics, reliability and patient comfort. Brilliant optics result in stunning image quality and resolution. An innovative LED illumination system with integrated eye illumination and digital camera delivers superb clinical viewing.

Digital camera ready

Frey SL-100 integrates specialized componentry to connect and control Frey bespoke digital imaging system. Push button joystick and eye illumination system controls are elegantly integrated. Simply add digital camera system allowing clinicians to enjoy outstanding ergonomics and complete control over the imaging process clinical examination.

LED illumination system

The LED illumination source eliminate heat and infra red emissions associated with traditional light sources and ensures optimal diagnostic detail from the cornea to the

retina. LED exhibits superior duty cycle and reduces medical device maintenance and downtime significantly. LED light intensity is precise and easy to use, delivering a sharp and bright slit for superior performance and control.

Improve clinical workflow

Superb mechanics, Frey SL-100 is very easy to operate. Frey combines modern design and enduring performance providing the clinician with fatigue free examinations every day. Yellow contrast enhancing filter for additional contrast is cleverly integrated into the optical body of the microscope, and can be subtly operated for viewing corneal staining.

Device type	SL-100 Slit Lamp				
Microscope type	Convergent binocular optical microscope @ 8°				
Eyepiece	Wide field 12.5 x				
Magnification power selection system	Five position rotating drum				
Magnifying powers	6x	10x	16x	25x	40x
Field of view [mm]	36	23	14	9	6
Minimum slit opening	0.2 mm				
Slit length	1.8 – 14 mm continuously variable				
Slit projection scale	1x				
Slit stops	0.3/ 1 / 3 / 5 / 9 / 14 mm				
Filters	clear, blue, natural density, yellow, diffuser, red free - green, red				
Slit rotation	+/- 180° with reference scale				
Slit angle	+/- 90° continuous				
Vertical slit tilting angles	0°, 5°, 10°, 15°, 20°				
Fixation lamp	Green LED				
Chin-rest height adjustment	70 mm				
Base travel	100 mm X-axis, 100 mm Y-axis, 30 mm Z-axis				
Eyepiece diopter adjustment	-5D do +5D				
Distance between pupils	50 – 80 mm				
Working distance	110 mm				