

REXONEYE



THE EYE WELLNESS SOLUTION





THE EYE WELLNESS SOLUTION

REXON-EYE THERAPY

Rexon-Eye® is a non-invasive device based on QMR Technology that treats the cause of dry eye disease, delivering long-term results **for all forms of dry eye and all types of skin.**

It works by applying a low power high frequency electrical current, which has **an important anti-inflammatory**¹ action and is capable of stimulating the metabolism² and **natural regeneration of cells.**³

The treatment addresses all types of dry eye (evaporative, aqueous deficient and mixed dry eye), as evidenced by subjective and objective measurements reported in published clinical studies.^{4 5 6 7 8 9 10}

The Rexon-Eye® Therapy is successfully applied and highly appreciated worldwide by ophthalmologists and optometrists.



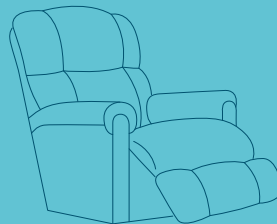
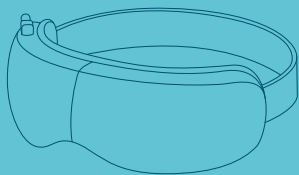
HOW DOES IT WORK?

The treatment is delivered by contact electrodes built into a mask, which is worn by the patient over closed eyes. **The device setup is very easy and intuitive.**

The operator simply needs to select the power and the duration of the treatment by turning a rotary knob and then pressing it to confirm.

For a successful treatment, set aside a quiet area and create a relaxed atmosphere to ensure optimal result.

THERAPY PROTOCOL



4

**TREATMENT
SESSIONS**

20

**MINUTES
EACH**

1

**WEEK
INTERVAL**

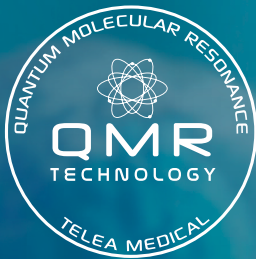
UNIQUENESS OF THE THERAPY

- All types of Dry Eye disease: evaporative, aqueous deficient and mixed
- Regenerative effect thanks to the QMR® Technology
- Pleasant and relaxing treatment for all types of skin
- Anti-inflammatory effect
- Hands free sessions

HANDS FREE SESSIONS

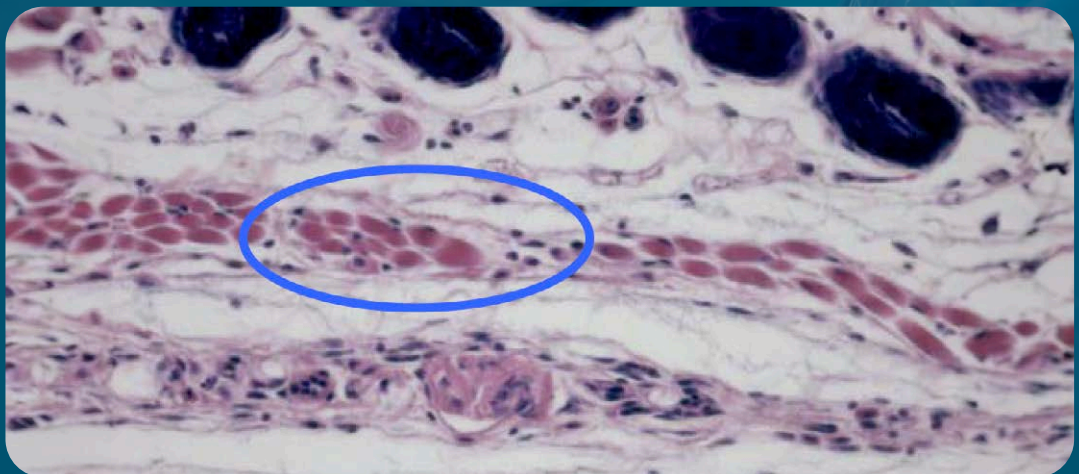
The Rexion-Eye therapy must be set up by the medical personnel, but they do not need to be present with the patient during the entire session. The Rexion-Eye device is provided with a **Patient Calm Control**, which is given to the patient to stop the therapy if necessary.





QMR® TECHNOLOGY

The principle of operation of Rexion-Eye® is the Quantum Molecular Resonance (QMR®) Technology, which delivers a mild alternate electrical signal containing a specific mix of frequencies (from 4 MHz to 64 MHz) that has been shown **to stimulate the natural regeneration of cells** ³, in addition to having an important **anti-inflammatory action**. ¹



Studies showed that after a course of QMR® stimulation, the parvocellular infiltrate (black dots) appeared within the muscle fibers. This is a result of the regenerative process in progress.

THE ANTI-INFLAMMATORY EFFECT

Inflammation plays a key role in what is called the "**vicious circle of dry eye.**" Inflammation leads to tear film instability and ocular surface damage. As the eyes become drier, the level of inflammation increases. This heightened inflammation further exacerbates the dryness of the eyes.

REXON-EYE® Therapy interrupts this cycle through its anti-inflammatory effect. The technology acts to modulate macrophage polarization from the pro-inflammatory M1 phenotype towards the anti-inflammatory M2 phenotype. Macrophages M2 **reduce inflammation** by downregulating inflammatory cytokines and **releasing anti-inflammatory cytokines.** ¹

NATURAL REGENERATIVE EFFECT

QMR® technology emits packets of energy quanta capable of altering ion concentrations in the intracellular/extracellular matrix (biochemical effect), leading to significant changes in the transmembrane potential of the target cells. ² These changes trigger metabolic pathways that **stimulate MSCs (Mesenchymal Stromal Cells)**. Subsequently, MSCs differentiate into the required cell types.

Due to the properties of stem cells, **the regenerated biological tissue** possesses the same characteristics and functionality as the original tissue.

BIOLOGICAL SAFETY

QMR® Technology is proven to be biologically safe. Rigorous studies on chromosomes, apoptosis, proteins, and 28,000 genes have affirmed its biological safety, assuring **the absence of cellular damage in patients.** ³

REXON-EYE ACCESSORIES



Rexon-Eye Mask

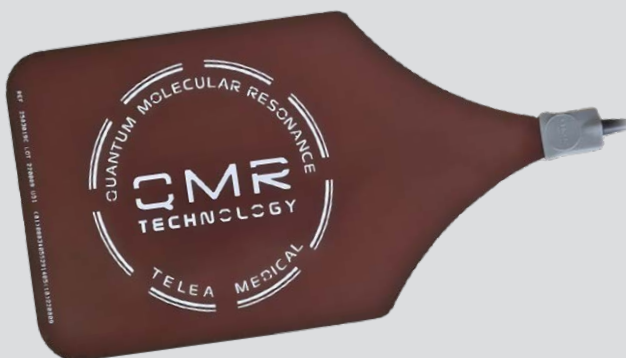
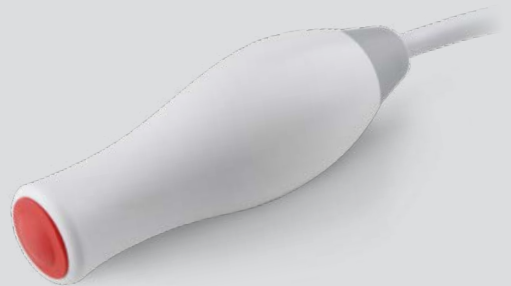
Rexon-Eye Active Mask electrode with cable. The accessory worn by the patient to deliver the therapy. The string behind can be regulated

Code: **4002030R**

Patient Calm Control

Allows patients to effortlessly pause their therapy if needed, ensuring a comfortable and stress-free experience.

Code: **4002018R**



Neutral plate

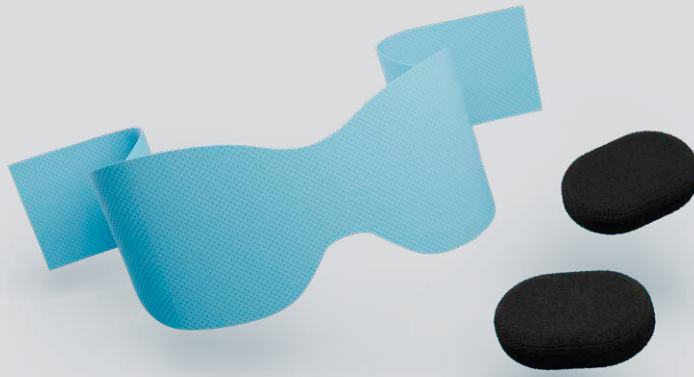
Should be positioned on the seat to maximize the contact surface with the patient and complete the monopolar circuit.

Code: **2503019CR**

Hygiene and Safety Essentials

Disposable Tissues and Personalized Therapy Pads ensure hygiene and optimal performance during the therapy with the Rexion-Eye Mask

Code: **4002036R**



6 Disposable Tissues

These disposable waterproof tissues are essential for maintaining both hygiene and patient safety. They also ensure that the electrical current is distributed evenly across the entire eyelid surface during therapy.



2 Personalized Therapy Pads

The Personalized Therapy Pads are made of high-quality conductive fabric, providing optimal signal delivery. Designed for single-patient use, these pads ensure maximum comfort and effectiveness throughout the entire therapy session.



CleanGuard Cover

Maintain the medical device's appearance as brand new with the CleanGuard Cover, ensuring cleanliness and protection.

Code: **4002032R**

REXON-EYE PORTABLE SOLUTIONS

Essential Travel Case

This lightweight case ensures safe transport of the Rexion-Eye device, combining robust protection with a comfortable grip.

Code: **2301102**



Premium Hard-Shell Suitcase

A rugged, impact-resistant suitcase designed for superior protection. This hard-shell case resists impacts and ensures the Rexion-Eye device remains safe during extended trips.

Code: **2301103**



Smart Folding Trolley

The Rexon-Eye device comes with a versatile trolley that easily transforms for convenient use and storage. It is designed for effortless transportation and can be easily folded

Code: **4002037R**



TECHNICAL DATA:

- Supply voltage and frequency: 100-230 V, 50 / 60 Hz, power consumption 300 VA
- Maximum output power: 20W / 200 Ω dual channel (mask electrode)
- Output frequency: patented spectrum 4-64 MHz
- Class IIa device (Directive 93/42/EEC)
- LCD Display
- Weight: 9kg
- Dimensions: 41x17x40 cm



Code: **4001007**

1. Paolucci et al., Antioxidants, 2023
2. Dal Maschio et al., BAM, 2009
3. Sella et al., PloS ONE, 2018
4. Pedrotti et al., Br. J. Ophthalmol., 2017
5. Ferrari et al., Cornea, 2019

6. Trivli et al., J. Of Optmetry, 2022
7. Kavroulaki et al., Cureus 2023
8. Ballesteros-Sánchez et al., Ophthalmol Ther, 2023
9. Shemer et al., Cornea, 2023
10. Foo VHX et al., Front Med, 2023



Patented in UE,
USA and other
countries.



RESONO

OPHTHALMIC

Resono Ophthalmic S.r.l.
Via Leonardo da Vinci, 13
36066 Sandrigo (VI) - Italy



+39 044 412 419 47



contact@resono.it



www.resono.it

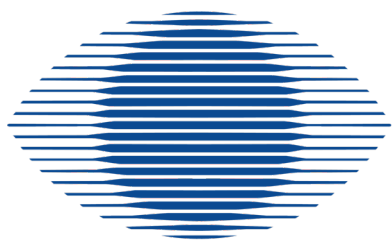


Request our collection of QMR documentation in ophthalmology
and clinical outcomes with the Rexon-Eye medical device.

Rev. 01/2024 Subject to technical changes as part of product development, as well as errors and omissions



DISTRIBUTORE ITALIANO



SIRoftalmica

SIR Oftalmica Srl

Via Napoleona 7

22100 - COMO

Tel. : 031-570869

info@siroftalmica.com

www.siroftalmica.com

P.IVA : 01814920136

Cell. A. Molteni: 328.1808176